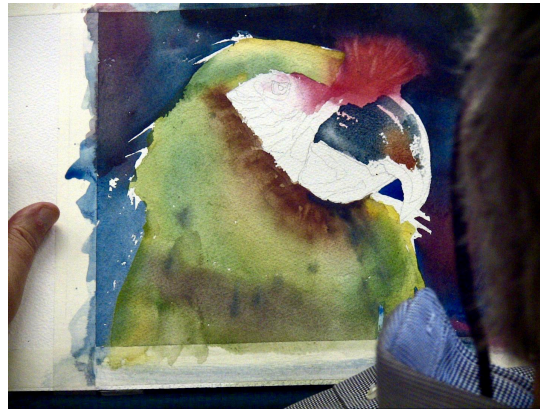




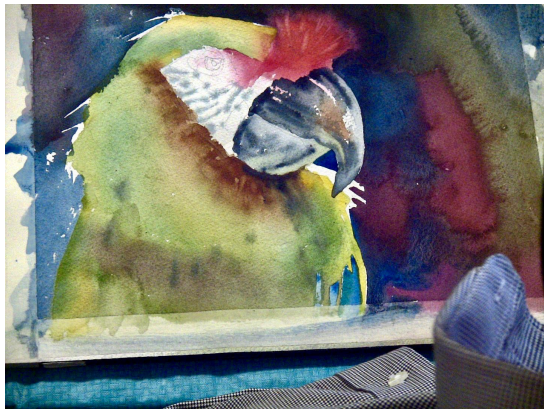
Start with the beak. Build roundness in the beak by using soft edges and broken strokes....



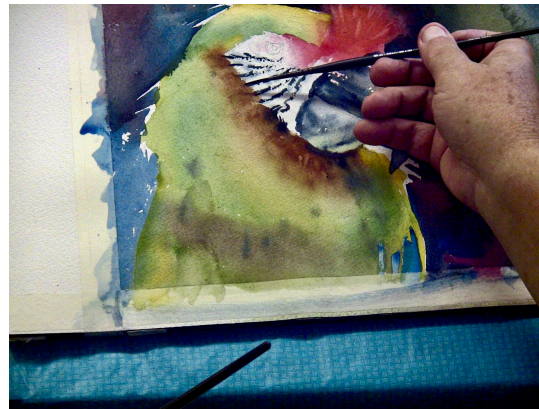
...merging Payne's gray, brown and pink....



....with clear water. Don't overwork it.



Some of the face markings are soft and some hard. Drop in the soft markings first.



Then, using a rigger or 1/4" brush, place broken stroke of Payne's gray over the soft.



For the eye, paint the entire eye a pale yellow-green, leaving the highlight.

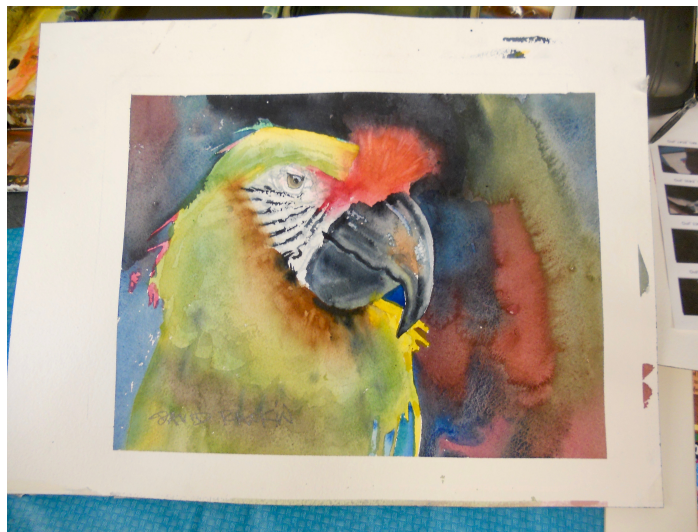


Put a very weak blue into the eye reflection. The pupil still needs a near darkest dark. Use neutral tint...take water away with paper towel...and darken the pupil with this darkest dark.

More detailing is needed around the eye. David used the rigger and drew with it lightly around the eye.



Outline around the eye with Payne's gray and paint the pupil. Put neutral tint in the eye corners and push up into the corners with a clean wet brush...."these small things add a lot!"



David's final image. Notice how spice colors have been added to all the white 'feathers' around the bird. Also, notice the dark color under the lower beak.